



**McVAC SERVICED THE FIRST PROJECT IN THE U.S.A. TO USE THE DIRECT PUSH METHOD**  
**NYC DEP / NYC DDC Installed a New Drinking Water Connection to City Island NY (Project)**

**Conclusion**

**DELVE**  
underground

- Project successful
- Stable water source provided for City Island, NY
- First project in the United States to use Direct Push Method**
- First time HDD project for DDC
- Trenchless and HDD to be used for future NY projects

Maidie Erickson, PE. reposted this

**Northeast Remsco Construction, a JAG Company** + Follow  
4,075 followers

At the American Water Works Association NJ Conference Maidie Erickson, PE. of Delve Underground shared a summary of our #CityIsland project with Huxted Trenchless, a JAG Company formerly known as ECI Drilling. It was a challenging project but #TeamAccomplishment and #WorkEthic helped to make it a success. [www.northeastremesco.com](http://www.northeastremesco.com)

NEW JERSEY SECTION

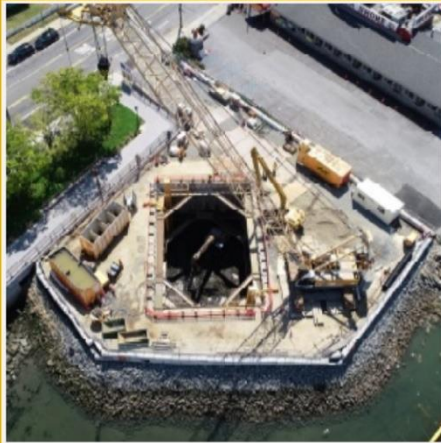
AWWA New Jersey

**March 18<sup>th</sup>-21<sup>st</sup> 2025 American Water Works Association NJ Annual Conf. (Borgata Hotel Casino & Spa) Atlantic City, NJ – Delve Underground presented the scope, challenges and lessons learned from this Project.**

**PROJECT DESCRIPTION Pelham Bay Park (Bronx) to City Island, NY (June '19 – December '21)**

**NYC Department of Design and Construction** The NYC DDC completed this \$34 million project to upgrade the drinking water connection to City Island. During construction, horizontal directional drilling was used to create two 20-inch 2000-foot pathways under Eastchester Bay for the new water main pipes to travel from the Rodman's Neck peninsula toward City Island. The process included boring a pilot hole from one surface point to another, expanding that hole to the appropriate diameter to accommodate the pipes being installed, grouting into place a steel sleeve that stabilizes the tunnel and then pulling the water main pipes through the enlarged hole. Work on City Island itself included the construction of a receiving pit where the new pipes would tie to the local water main distribution system. Amongst other recognitions, the project was named "2021 Project of the Year" in the \$25-100 million category by the Construction Management Association of America's NY/NJ Chapter (CMAA) for providing safe and reliable drinking water to 4,500 residents in City Island. The project was designed by Dewberry, the design was carried out by Northeast Remsco Construction, Inc. and engineering services were provided by McMillen Jacobs Associates (rebranded as Delve Underground July 2023).





### 20" SUBAQUEOUS WATER MAINS TO CITY ISLAND

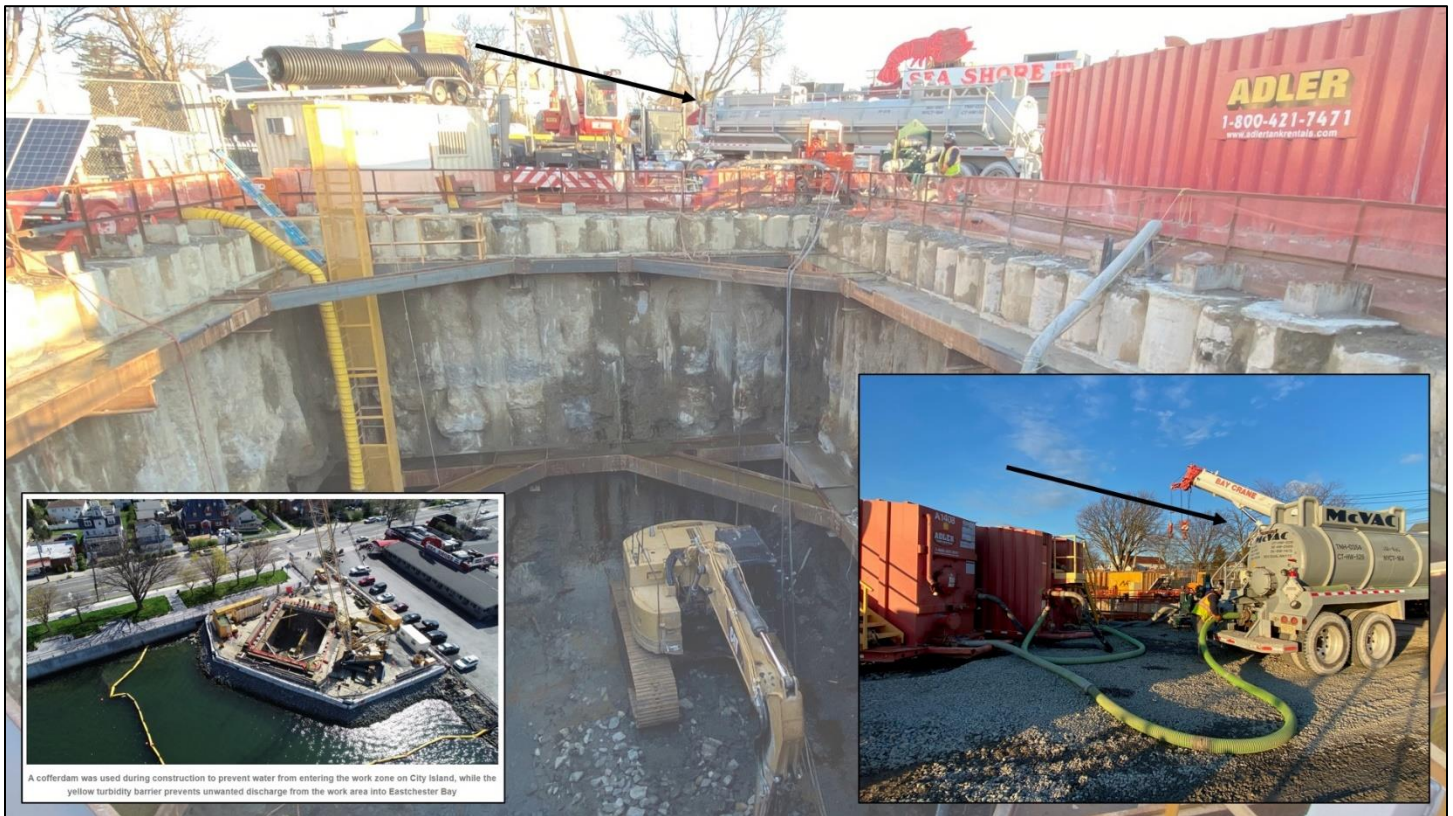
This project required the replacement of an existing 100-year old water main with dual 20-inch DIP force mains beneath the Eastchester Bay. The new force mains will provide City Island with clean water. The contract consists of the installation of a temporary peninsula in the Eastchester Bay in order to facilitate the construction of a cofferdam.

We constructed approximately 4,000 LF (2 drives) of 44" drill holes at depths up to 100 ft. beneath Eastchester Bay via HDD. The majority of the drilling through Gneiss. We installed 32" of welded steel casing through previously drilled bore holes. The casing was installed with a pipe thruster in three separate pipe strings, up to 900 ft. in length. We sliplined 20" DIP into 32" steel casing on rollers, grout annulus between casing and DIP. Hydric fill was installed in abandoned 12" and 16" water mains. Finally, we removed the existing temporary force main on the City Island Bridge.

**Location:** Bronx, NY  
**Date:** December 2021  
**Owner:** NYC Department of Design and Construction



McVAC provided waste handling, trans. and disposal services throughout the HDD / pipe thrusting operations.



A cofferdam was used during construction to prevent water from entering the work zone on City Island, while the yellow turbidity barrier prevents unwanted discharge from the work area into Eastchester Bay


For questions pertaining to this information or regarding the Company's services please call 888.549.2606.






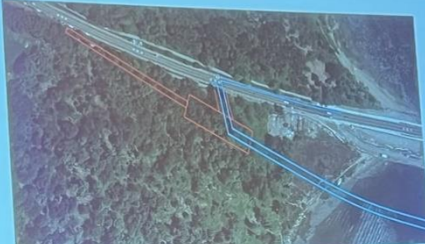
**March 18<sup>th</sup>-21<sup>st</sup> 2025 American Water Works Association NJ Annual Conf. (Borgata Hotel Casino & Spa)**

Images of the slide content presented by Delve Underground at the Conference are included here:

**DELVE** underground Annual Conference March 18<sup>th</sup> to 21<sup>st</sup> 2025 (slides on LinkedIn) 




**Project Limits**  
Pelham Bay Park



Legend  
Blue: Water Lines  
Red: Contractor Laydown Area


1

**Project Limits**  
City Island




Legend  
Blue: Water Lines  
Red: Contractor Laydown Area  
Green: Sewer and Outfall

2

**DELVE** underground Annual Conference March 18<sup>th</sup> to 21<sup>st</sup> 2025 (slides on LinkedIn) 


**Pipe Thrusting Operation**



3

**Construction Entry and Exit Areas**

- o Pelham Bay Park Entry
- o City Island Exit



4

**Challenges**

- 1 Permit modifications through multiple agencies
- 2 Small laydown/staging areas working in urban setting
- 3 Electronic interference from bridge utilities during pilot hole drilling of the shaft
- 4 Drilling through abrasive fractured gneiss rock
- 5 Saltwater intrusion
- 6 COVID-19

5

**DELVE** underground Annual Conference March 18<sup>th</sup> to 21<sup>st</sup> 2025 (slides on LinkedIn) 

**Conclusion**

- o Project successful
- o Stable water source provided for City Island, NY
- o First project in the United States to use Direct Push Method
- o First time HDD project for DDC
- o Trenchless and HDD to be used for future NY projects



6

**Lessons Learned**

- o Community Outreach is Important
- o Close Communication and Coordination is Key
- o Experienced Contractor and HDD Subcontractor
- o Active On-site Construction Management Team
- o Safety, Social Distancing, Flexibility



7

**AWWA NJ ANNUAL CONFERENCE 2025**

Tell a Friend

Our largest event of the year!!!

**3/18/2025 to 3/21/2025**

**When:** Tuesday, March 18, 2025

**Where:** Borgata Hotel Casino & Spa  
1 Borgata Way  
Atlantic City, NJ 08401

**Contact:** Liz Wahlen  
liz@njawwa.org  
866-436-1120

CREDITS - The content included herein was obtained from the following sources:

- ✓ Delve Underground LinkedIn post;
- ✓ Northeast Remsco Construction LinkedIn post;
- ✓ NYC DDC website;
- ✓ McVAC Environmental Services job photo files;